

SIMPLIFY THE CONTROL OF YOUR MACHINE.

PRACTICAL AND FUNCTIONAL TOUCH-SCREEN CONTROL TERMINAL

This user-friendly controller allows you fingertip control of your liquid spreader. Increase your productivity by automating your pumping, transport and spreading cycles. Monitor in real time all the information of your operations and collect safely these data to manage your spreading records.

The combination with the joystick gives you access to the main operating functions. It guarantees you comfortable use even when driving on difficult grounds. Your terminal's parameters are determined according to your machine's specifications. Save time when you change implements by reloading your saved settings. For any specific work, you can easily switch to manual mode and have total control over your machine.



ICONTROL 7S

Touch-screen controller

- Optimised touch-screen surface (7" screen)
- New ergonomics and modernised display
- Simplified configuration of terminal
- Effective management and control of machine
- Automation of working cycles
- Real-time information displayed on the screen
- Monitoring and recording of the operations

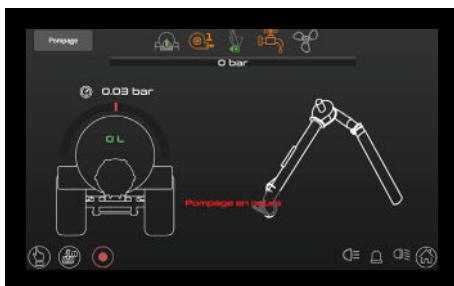


ICONTROL S

Multi-function joystick

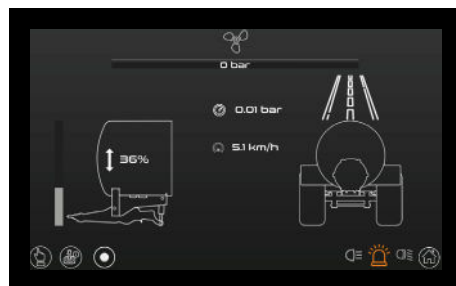
- Redesigned and enhanced ergonomics
- Fit perfectly to the interior of the cab
- Easy to use
- Higher productivity and comfort
- Browsing between the 3 working pages
- Access to the machine's key functions





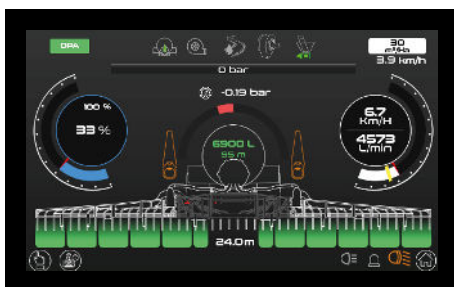
PUMPING

- Arm control via joystick
- Automatic start/stop of cycle
- Icons to show functions status
- Information displayed in real-time:
 - Hydraulic pressure
 - Tank pressure/vacuum



TRANSPORT

- Locking of spreading implement
- Blocking of all machine's functions
- Automatic on/off of flashing beacon
- Information displayed in real-time:
 - Hydraulic pressure
 - Forward movement speed
 - Kilometers travelled



SPREADING

- Spreading implement control via joystick
- Automatic start/stop of cycle
- Flowmeter: entry and control of application rate
- Information displayed in real-time:
 - Valve opening
 - Indicator of liquid level in tank
 - Real forward movement speed of tank
 - Target forward speed
 - Instant liquid output rate (L/min)
 - Spreading distance on field



DATA SAVING

- All data collected during:
 - Pumping
 - Transport
 - Spreading
- Traceability for the operations carried out
- Output data to USB key

